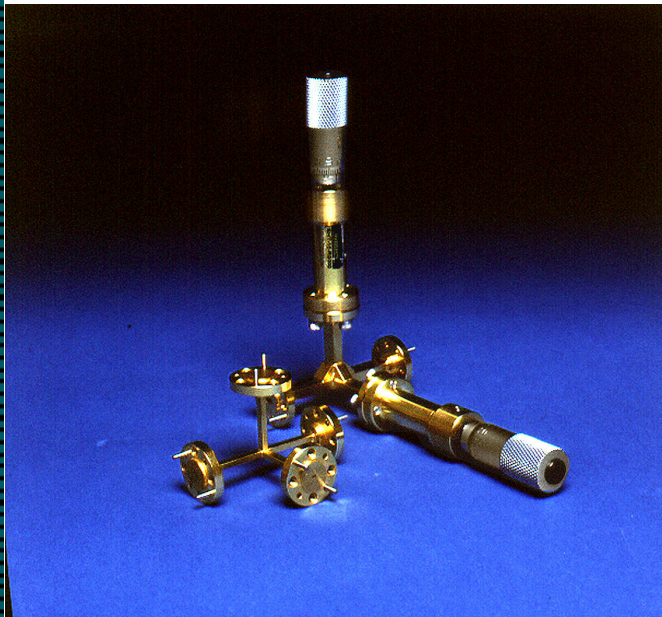


SERIES EHT/HBT

HYBRID TEES AND E- AND H-PLANE TUNERS



FEATURES:

- 26.5 to 220 GHz coverage
- Convenient to use
- Low insertion loss

APPLICATIONS:

- Impedance matching
- Test and instrumentation
- Power division/combining

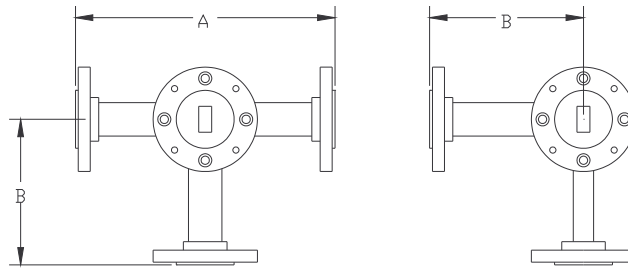
DESCRIPTION

Millitech series HBT hybrid tees are four-port transmission line components where the junction of the series arm (E-plane) and shunt arm (H-plane) are positioned in such a way to give power division and combination in both ports of the transmission line. These tees are available between 26.5 and 220 GHz. They are useful for many laboratory measurements. For those applications requiring high isolation between shunt and series arm, impedance matching, and balanced power splitting, Millitech series CMT magic tees will provide the level of performance necessary.

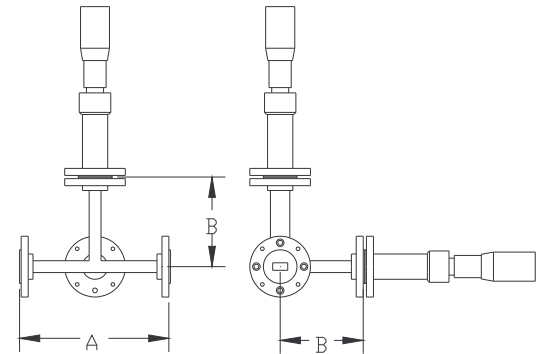
Millitech series EHT E- and H-plane tuners are a modification of the hybrid tee with micrometer-tuned noncontacting adjustable shorts placed in both the series and shunt arms. These tuners allow simultaneous adjustment of both the phase and amplitude of the reflection coefficient. They are available between 26.5 and 170 GHz, and are very useful for all impedance matching applications.

OUTLINE DRAWINGS

Series HBT



Series EHT



MECHANICAL SPECIFICATIONS

E-H Plane Hybrid Tees

Model Number	HBT-28	HBT-22	HBT-19	HBT-15	HBT-12	HBT-10	HBT-08	HBT-06	HBT-05
A (in/mm)	2.8/71	2.8/71	2.8/71	2.2/56	2.2/56	2.0/51	2.0/51	2.0/51	2.0/51
B (in/mm)	1.5/38	1.5/38	1.5/38	1.1/28	1.1/28	1.0/25	1.0/25	1.0/25	1.0/25

E-H Plane Tuners

Model Number	EHT-28	EHT-22	EHT-19	EHT-15	EHT-12	EHT-10	EHT-08	EHT-06	---
A (in/mm)	2.8/71	2.8/71	2.8/71	2.2/56	2.2/56	2.0/51	2.0/51	2.0/51	---
B (in/mm)	1.5/38	1.5/38	1.5/38	1.1/28	1.1/28	1.0/25	1.0/25	1.0/25	---
Flange MIL-3922	/54-003	/67B-006	/67B-007	/67B-008	/67B-009	/67B-010	/67B-M08	/67B-M06	/67B-M05

Note: The EHT plane tuners have no electrical specifications, but they are tested for functionality.

HOW TO ORDER

Specify Model Number

EHT-XX-A0000

HBT-XX-A0000

XX = Waveguide Band
WR – number

A = Flange Type

R – round (WR-28 through WR-05 only)

S – square (WR-28 only)

P – pin contact (WR-08 through WR-05 only)